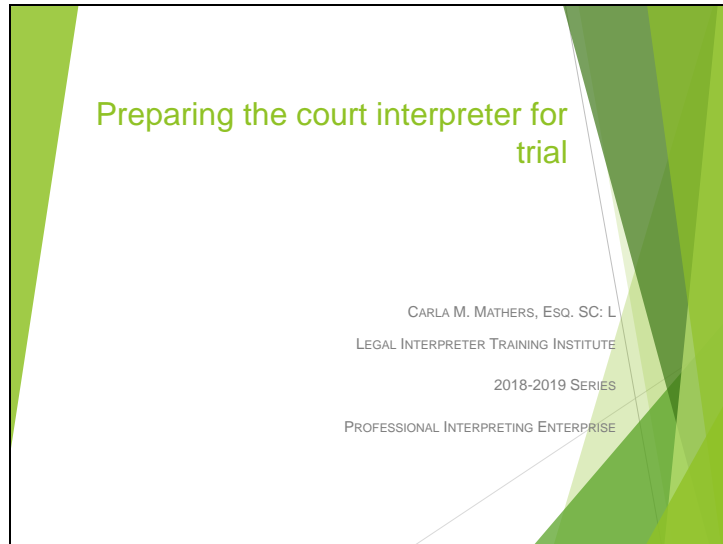


Slide 1

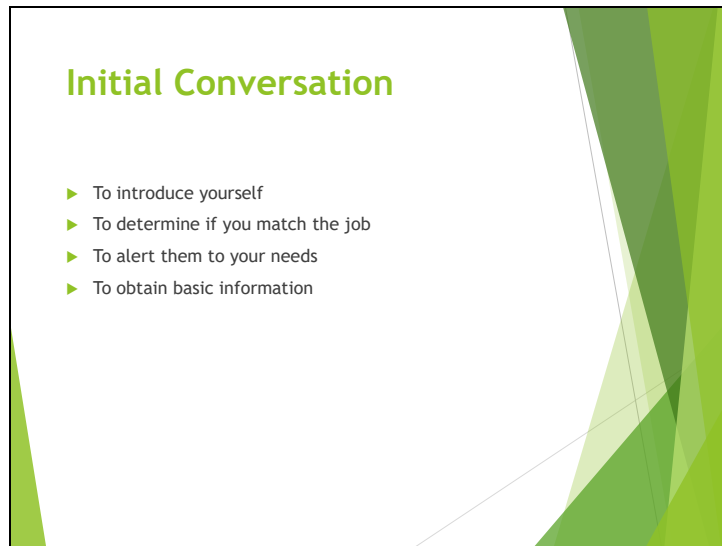


Interpreting Philosophy

- ▶ Defines the amount of preparation you do
- ▶ Level of equivalence required for accurate interpretation

Interpreter as Teacher/Student

- ▶ All preparation requires the interpreter to both learn a case and teach about interpreting
- ▶ Preparation Recipe:
 - ▶ Who
 - ▶ What
 - ▶ When
 - ▶ Where

A rectangular slide with a white background and a decorative border of overlapping green and yellow-green shapes on the right and bottom edges. The title 'Initial Conversation' is in a bold, green, sans-serif font. Below the title is a bulleted list of four points, each preceded by a green right-pointing triangle.

Initial Conversation

- ▶ To introduce yourself
- ▶ To determine if you match the job
- ▶ To alert them to your needs
- ▶ To obtain basic information



Meet with the Deaf Person

- ▶ Introduce/explain (Student)
 - ▶ All interpreters
 - ▶ Check conflicts
 - ▶ Court is different and why
- ▶ Instruct (Teacher)
 - ▶ Role differences
 - ▶ Private negotiations
 - ▶ Un-interpreted information

Document Preparation

- ▶ Case files
- ▶ Complaints (factual basis)
- ▶ Exhibits/reports
- ▶ Physical evidence
- ▶ Rebuttal evidence

- ▶ Criminal Cases
- ▶ Civil Cases
- ▶ Miscellaneous
